

INSTALLATION MANUAL

13451

Level of Difficulty

Difficult

Installation difficulty levels are based on time and effort involved and may vary depending on the installer level of expertise, condition of the vehicle and proper tools and equipment.

Weight Carrying Capacity

Gross trailer weight (GTW)	7,000 lbs.
Tongue weight (TW)	700 lbs.

Weight Distribution Capacity

Weight distribution (WD)	7,000 lbs.
WD tongue weight (WDTW)	700 lbs.

Parts List

Item	Qty	Description
1	1	Trailer hitch
2	4	Plastic rivet, 6mm

Tools Required

Ratchet	Drill
Socket, (8mm, 13mm, 18mm)	Drill bit, 3/16"
Socket extension, 6"	Flathead screwdriver
Plastic rivet gun	Tape measure
Panel trim removal tool	Rotary tool / Reciprocating saw
Torque wrench	--

*For a tools reference guide visit curtmfg.com/trailer-hitch-installation

⚠ WARNING

Never exceed the vehicle manufacturer's recommended towing capacity.

Product Photo



NOTICE

Visit www.curtmfg.com for a full-color copy of this instruction manual, as well as helpful videos, guides and much more!

Before you begin installation, read all instructions thoroughly.

Proper tools will improve the quality of installation and reduce the time required.

This installation requires:

- Trimming of underbody panel and bumper beam.

Periodic inspection of the trailer hitch should be performed to ensure all mounting hardware remains tight and structural components are secure.

To help prevent damage to the product or vehicle, refer to the specified torque specifications when securing hardware during the installation process.

SAFETY INSTRUCTIONS

Safety glasses should be worn at all times while installing this product.

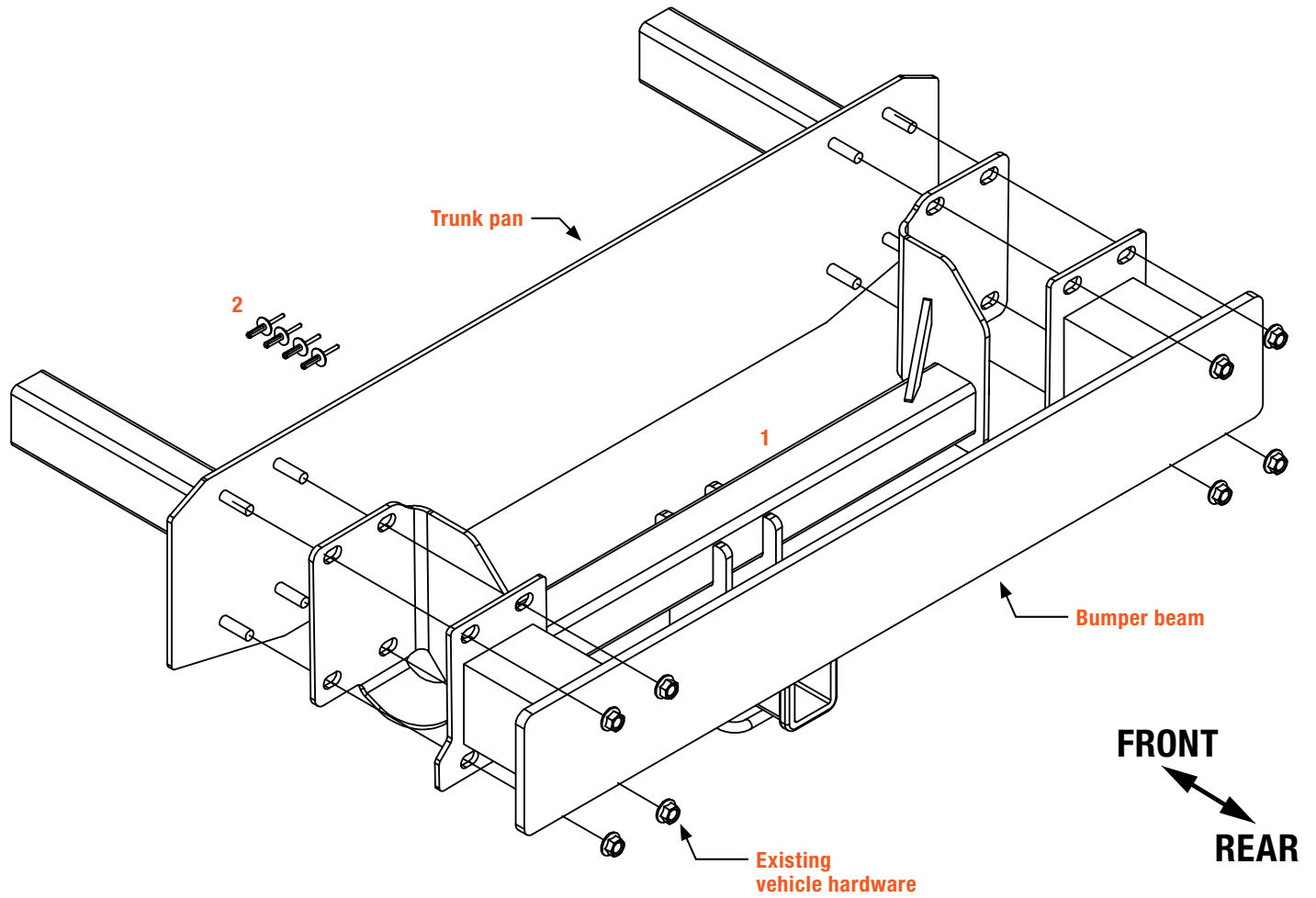
Product Registration and Warranty

CURT stands behind our products with industry-leading warranties. To get copies of the product warranties, register your purchase or provide feedback, visit: warranty.curtgroup.com/surveys

ASSEMBLY

Parts List

Item	Qty	Description
1	1	Trailer hitch
2	4	Plastic rivet, 6mm



Step 1

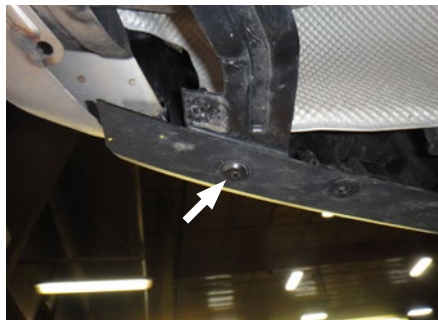
Remove / loosen rear wheel well trim on each side of the vehicle by gently pulling back on the wheel well trim until the seam of the lower fascia and side panel can be seen. This will expose a rivet hidden under each wheel well trim piece. Remove the previously hidden rivets by using a 3/16" drill bit to drill out the center of the rivet.

Note: Rivets cannot be reused and replacements are supplied for use during reinstallation.



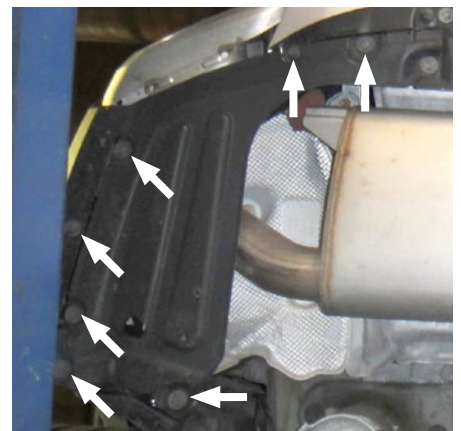
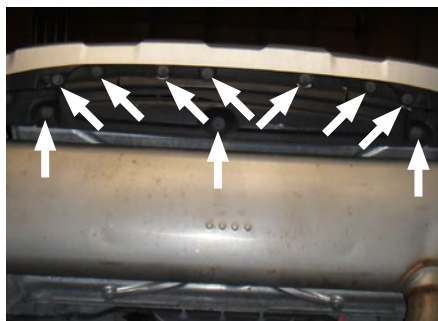
Step 2

Remove the rivet located on the underside of the fascia on each side of the vehicle by drilling them out.



Step 3

Remove the three underbody panels by removing 24 fasteners using an 8mm socket. Set the panels aside for reinstallation.



Step 4

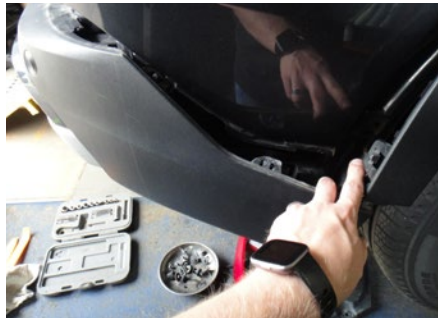
Remove the rear reflectors using the panel trim removal tools. Apply steady pressure at the inner-most portion of the reflector and pull rearward until the reflector pops out. One reflector is located on each side of the rear lift gate.



Step 5

Begin to remove the rear fascia at the wheel wells by applying outward pressure to separate the plastic retaining clips that secure the fascia in place.

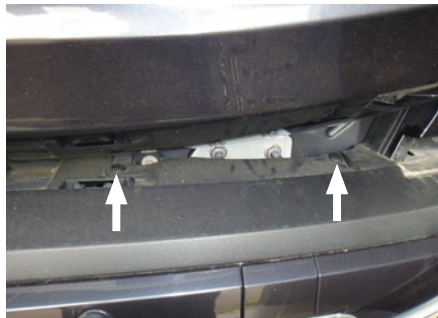
Disconnect the electrical harness located on the passenger side and set the fascia aside for reinstallation.



Step 6

Remove four push fasteners from the appearance panels. There are two push fasteners per appearance panel with a panel located on either side just above the rear bumper beam.

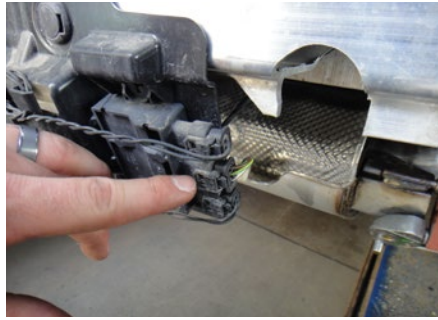
After removing the push fasteners, the appearance panels can be removed by pulling upward on the panel to disengage three plastic clips that help secure the appearance panel.



Step 7

Lower the exhaust using a 13mm socket to remove one nut from each side of the vehicle. Be sure to support the exhaust.

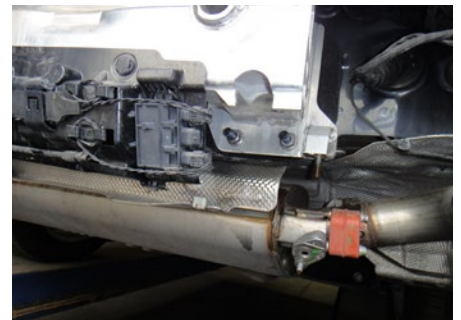
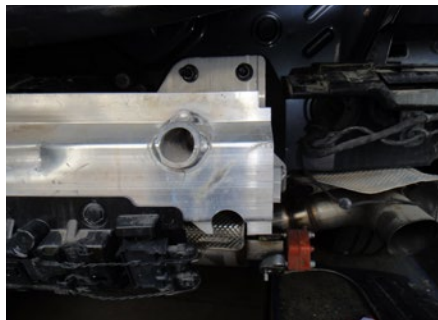
Disconnect the backup sensor and hands-free sensor from the bumper beam.



Step 8

Lower the tailgate to allow access to the upper bumper beam mounting fasteners. Using a 18mm socket, remove eight M12 nuts, four on each side securing the bumper beam. Remove the bumper beam and set to the side.

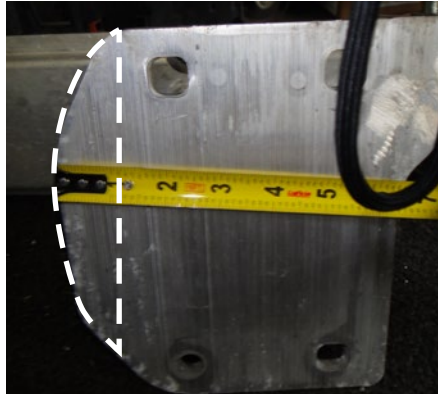
Note: The nuts will be reused for the hitch installation



Step 9

Trim the bumper beam mounting plate by 1" using the trim diagram to the right as a reference.

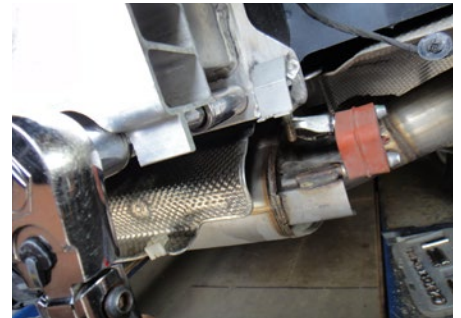
Repeat this process on both sides of the bumper beam. Be sure to get the owner's permission before trimming bumper beam mounting plates.



Step 10

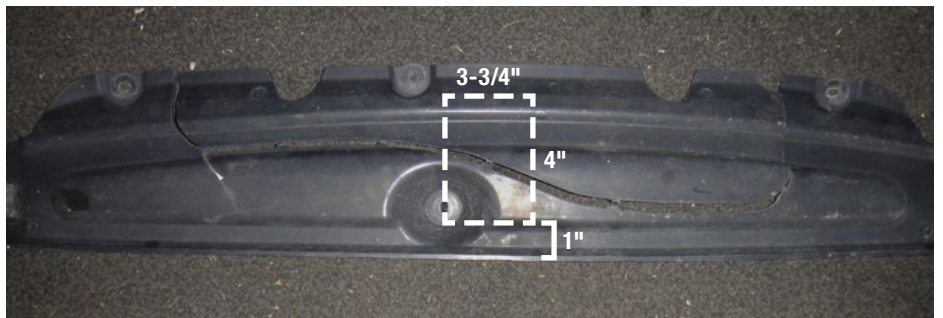
Raise the hitch and trimmed bumper beam into place and secure with eight M12 bolts that were removed in Step 8. Be sure to reconnect the sensor connections that were removed in Step 7.

Torque all M12 fasteners to 55 ft-lbs.



Step 11

Mark and trim the lower fascia panel using the trim diagram to the right as a reference. Be sure to get the owner's permission before trimming the fascia panel.



Step 12

Repeat steps 1 through 7 in reverse order by reinstalling the exhaust, rear trim pieces, fascia, making sure to reconnect the wiring harness that was removed during Step 5, reflectors and underbody panels.

Note: Trimming may be needed when reinstalling both rear appearance panels that were removed during Step 6. Trim each panel as needed if interference with the bumper beam is noticed during the reinstallation of appearance panels.



TOWING BASICS & SAFETY INFORMATION

For information on safely towing your trailer, visit curtmfg.com/understanding-towing.